

Flexibility for a wide range of absorbance assays



SMARTREADER™ UV-VIS

- ***Intuitive, 10-inch color touch screen control panel***
- ***Accepts both 96 & 384-well plates***
- ***Monochromator-based system***
 - *No filters required*
 - *Wavelength range from 200 to 1000 nm*
- ***Stand-alone design***
 - *No PC or special software required*
 - *USB port for flash drive data transfer*

The Accuris SmartReader™ UV-Vis Microplate Reader (model MR9610) has been designed with ease-of-use and fast results in mind. This instrument brings extensive capabilities to the lab bench and is designed for the busy lab with multiple users. The large touch screen command center is extremely user-friendly and allows for fast set up of new protocols, as well as modifying and running existing protocols.

Monochromator technology ... no filters needed!

The monochromator-based optical system allows for precise selection of wavelengths from 200nm to 1000nm, with no filters required. This range makes the SmartReader UV-Vis™ useful not only for typical ELISA, Bradford Lowry, and turbidity assays but also for more advanced applications such as quantitation of nucleic acids and proteins. The SmartReader™ UV-Vis can be set for Endpoint, Kinetic and Spectral Scanning assays.

High Throughput Capability

The MR9610 is designed for efficient processing of multiple samples and accepts standard 96 well plates as well as 384 well plates for high density screening (MR9611 includes cuvette port). The plate layout interface allows for a quick and intuitive setup of a plate well's contents. Users can highlight and label multiple wells to save time. The display shows a graphical representation of the plate. Users can label each well as required for: "known standard", "unknown sample", "blank well", "QC Control well", "positive control", "negative control", and "empty".

Optimized results with plate shaking and incubation

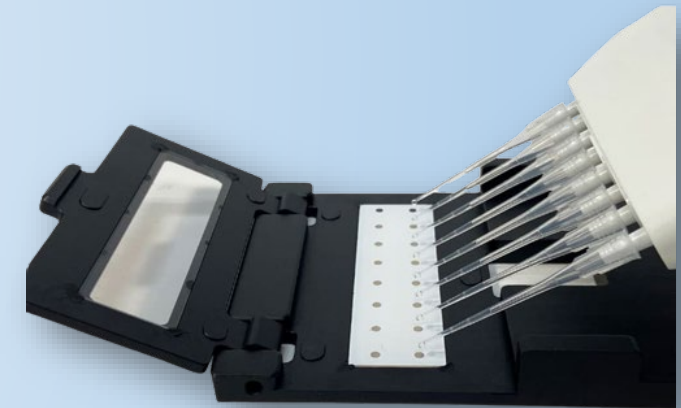
Controllable plate shaking and incubation allow for optimization of assay results. The shaking speed can be controlled at different intensities with options for timed and pulsed shaking before a reading, or in between readings when performing a kinetic assay. The linear motion efficiently and uniformly mixes all samples in both 96 and 384 well plates.

Temperature can be controlled from ambient +5°C up to 45°C, allowing for the processing of enzyme kinetics, and bacterial growth assays.



SmartDrop™ Accessory Plate

Absorbance measurements of exceptionally small volumes (<0.5ul) can be achieved using the SmartDrop™ Accessory Plate. The SmartDrop™ plate accommodates up to 16 samples and is ideal for checking nucleic acid concentrations and purity for Next Gen Sequencing, or protein concentrations.



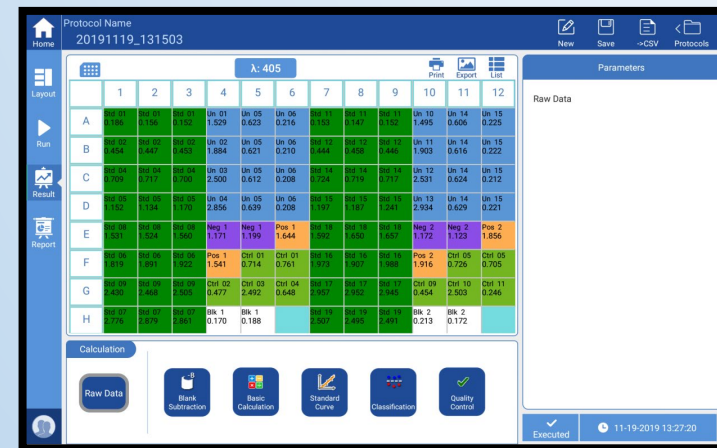
SmartDrop™ Accessory Plate



Cuvette port, available on the M9611 model



96-well Plate Layout Screen



96-well Reading Result Screen



Monochromator



Thermal Printer Available



PC Software Available



Touchscreen



10 in. Color Display



Data Transfer via USB

SMARTREADER™ UV-VIS

| Ordering Information | |
|---|--|
| MR9610 * | SmartReader™ UV-Vis Microplate Absorbance Reader, 115V |
| MR9611* | SmartReader™ UV-Vis Microplate Absorbance Reader with cuvette port, 115V |
| Accuris™ MR9610 Microplate Reader Accessories | |
| MR9610-SDP | SmartDrop™ Accessory Plate for MR9610 |
| MR9610-PC | SmartReader™ PC Software for MR9610 |
| MR9600-TP | Thermal Printer for MR9600/MR9610 |
| MR9600-PA | Extra paper rolls for MR9600-TP printer, pk/4 |

* Add "-E" to part number for 230V input



Technical Specifications:

| | |
|----------------------|--|
| Model | MR9610, SmartReader™ UV-Vis |
| Plates accepted | 96-well and 384-well flat bottom (MR9611 model includes cuvette port) |
| Display | 10-inch high resolution color touch screen |
| Controls | Touch screen and mouse |
| Light source | Xenon Flash Lamp |
| Wavelength range | 200 - 1000 nm with 1 nm steps |
| Wavelength Precision | ±0.2 nm |
| Wavelength selection | Monochromator |
| Read-out range | 0 - 4.0 OD |
| Bandwidth | <2.5 nm |
| Detector | Dual silicon photoelectric detectors for measurement and reference |
| Linearity @450nm | $R^2 \geq 0.999$ (0.0 – 3.0 Abs) |
| Accuracy @450nm | 1.0% + 0.003 Abs (0 - 2.0 Abs) ; 2.0% [2.0 - 2.5 Abs) |
| Precision @450nm | CV < 0.5% in precision model CV < 1.0% fast mode |
| Measurement speed | 96 well plate: <8 seconds (fast mode); <28 seconds (precision mode) 384 well plate: <74 seconds (only precision mode available for 384) |
| Plate shaking | Linear; three options: (16.8Hz, 1mm), (6.68Hz, 3mm), (2.44Hz, 15mm) |
| Incubator | From ambient + 5°C to 45°C |
| User Interface | Integrated software, control by touch screen (PC control software optional) |
| Analysis software | PC Software available for connected Windows™ PC |
| Storage | 16G memory, more than 10,000 test records can be stored |
| Ports | 1 B-type USB port for PC connection 1 Ethernet port 2 A-type USB ports for mouse and printer connections |
| Power supply | Included power adapter: DC24V 6.67A, AC 100V-240V |
| Dimensions(WxDxH) | 300x500x260mm / 11.8 x 19.7 x 10.25 inches |
| Weight | 15.5kg / 34 Lbs. |

SMARTREADER™ UV-VIS



scientific inc.

4165 Lippincott, Burton, MI 48519
800-878-1785 | orders@dotscientific.com